

Integrati 20 Release Notes



IMPORTANT NOTES

Customers Upgrading From a version **prior to 18.0** should read about the changes to the “Review” event log in.

[Click Here](#) to find out more.

CONTENTS

Release Notes.....	1
Important Notes.....	1
Contents	2
Version 20	3
Bug-Fix Release (v 19.1.4)	7
Bug-Fix Release (v 19.1.3)	8
Bug-Fix Release (v 19.1.2)	9
Bug-Fix Release (v 19.1.1)	10
Version 19.1	11
Bug-Fix Release (v 19.0.1)	15
Version 19	16
Bug-Fix Release (v 18.2.3)	18
Bug-Fix Release (v 18.2.2)	19
Bug-Fix Release (v 18.2.1)	19
Version 18.2	20
Bug-Fix Release (v 18.1.2)	24
Bug-Fix Release (v 18.1.1)	25
New in Version 18.1	27
Bug-Fix Release (v 18.0.4)	30
Bug-Fix Release (v 18.0.3)	31
Bug-Fix Release (v 18.0.2)	31
Bug-Fix Release (v 18.0.1)	32
Version 18	33
Appendix	37
V18 Review Improvements	37

VERSION 20

March 2020 - 20.0

V20 Licensing Change

A major part of the Integriti V20.0 release involved assessing and evaluating the full Integriti hardware and software licensing model. These changes include new product editions, each including a different set of features, changes to existing licenses and the removal or combining of several existing licenses, among other things.

For the full details on the licensing changes included in Integriti V20.0, see 'Integriti License Change Release Notes.pdf' for a full breakdown of the changes.

Client Connection Licensing

We have simplified and improved how client licensing works.

There are no longer separately priced & counted fixed, floating & web interface licenses, they are all replaced by a single "Client License", which is included as part of the Integriti Product Edition.

All existing sites' fixed / floating / web licenses will be automatically converted to additional client seats, providing additional client connections on top of what is included as part of the Integriti Product Edition.

The functionality that used to be provided by "fixed workstation licenses" is now a core feature, and is covered in the "Reserved seats" section below.

Each "Client License" allows:

1. Up to 4 Clients from a single workstation (2x System Designers + 2x Gatekeepers)
or
2. A single Web Interface session

Additionally, a single local "System Designer" login is ALWAYS permitted from any Activated Server.

Reserved Seats

Client Seats can be *reserved* (from the License Manager in system designer) for either:

- Workstations (existing fixed workstations)
- Operators

Reserving client seats ensures your most important workstations / operators are always able to access the system.

Reserving a seat for a specific Operator is a new feature with V20.0, allowing that operator to always be able to log in, regardless of the workstation they are at.

Remote Disconnect

Operators with reserved seats will always be able to login with a Gatekeeper or System Designer client from anywhere. Even if they are logged in somewhere else and all seats are taken, the login window will present a list of the operator's existing sessions, so one can be chosen to be closed.

Integrations

- **License Plate Recognition:** Added option to LPR Card Formats to not badge detected License Plates at the associated Reader if they don't have a matching Card programmed in Integriti.
- **Export CCTV Footage:** Added option to export the 'current frame' when exporting CCTV footage from the video viewer. This will export the frame currently showing in the viewer when the command is invoked.
NOTE: Export Current Frame is not supported by all integrations, and requires a supported integration to function.
- **Video Viewer:** Individual video streams can now be dragged between different viewer panels, and between different instances of System Designer and GateKeeper on the same computer.
- **Video Viewer:** Added support for using the mouse wheel to zoom in and out when viewing video streams.
- **Default PTZ Speed:** CCTV Cameras and CCTV Recorders now have the option to specify default Pan, Tilt and Zoom speeds to be used when sending these commands from the video viewer. This allows easy overriding of the default PTZ speeds to make the camera move faster or slower as required.
These properties should be set to the percentage of the built-in default PTZ speeds to use, with 100 specifying to use the built-in default PTZ speed. Set to 0 to use the defaults specified in the device's parents, where the device has a parent, and the built-in defaults where it doesn't.
NOTE: This feature requires a supported CCTV integration for these properties to have any effect.
- **Integration Server Startup:** Improved integration server startup speed and error handling.
- **Intercoms:** Added the option to specify an unlock time to be used when unlocking associated doors on an Intercom Point. This can be configured through the 'Associated Door Unlock Time' property in either the Intercom System's configuration, or overridden in the Intercom Point's configuration. Leaving the unlock time configured as zero will maintain the previous behaviour of unlocking the associated door/s indefinitely.

Display Themes

Display Themes allow customisation of the look of Integriti lists, allowing the selection of font, text colour and background colour of rows/items in a list based on the configuration or current state of each item. This gives the ability to make individual rows stand out from the rest based on custom criteria, allowing for an improved workflow and better visibility of the status and configuration of items in the list.

- **Disabling Themes:** Added the ability to disable Display Themes to prevent them being automatically used by Entity Lists. Display Themes associated with a Filter will still be used, even when disabled.
- **Review Categories:** Improved editor used when selecting Any Of or Not Any Of values for Review Display Theme's Category property.
- **Display Theme Rules:** Display Theme Rules can now use a custom filter to specify rules more complicated than can be configured in the default rule editor.
- **Display Theme Rules:** Integrated Device and Communication Handler state properties can now be selected for Display Theme Rules.
- **Dark Themes:** Added the option to specify Display Themes as 'Preferred For Dark Themes'. This allows for Display Themes to be prioritized based on whether the skin of the currently active theme is dark or light, where multiple Display Themes have the same preference. This opens up the option to configure a different Display Theme for dark and light skins and have

the correct one always be used, helping ensure better colour contrast with the skin's built in background and text colours.

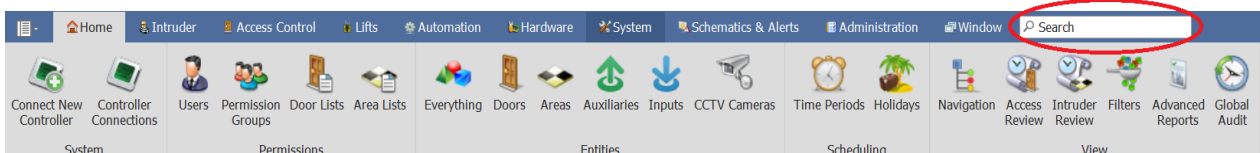
- **Default Display Themes:** Default Display Themes have been added for a number of types, allowing for default colouring of these lists and easier customisation of the default colouring.

XML Rest API

- **Compression:** Added the ability to use GZIP compression on large XML responses
- **Review:** Added the ability to long poll for new Review Records
- **Virtual Card Badge:** Virtual Card Badge now supports specifying a Door to badge at by name.
- **Virtual Card Badge:** Can now wait for panel ack or Access Review to ensure the command was executed successfully

Improvements

- **Disconnect Clients:** Client connections can now be remotely disconnected from the Client Connections list in System Designer by Operator's with sufficient permissions.
- **HID Mobile Credential Integration:** Added support for the HID Mobile Credential Origo (subscription) portal. Newly created HID Mobile Credential Communication Handlers will be created referencing the new portal.
To create a new HID Mobile Credential Communication Handler using the Secure Identity Services (perpetual) portal, the HID Client Portal Version of the Communication Handler should be set to 'Secure Identity Services (1.0)'.
- **Controller Short Name:** For multi-Controller systems, a short name can now optionally be added to Controllers to prefix the Address of each Entity in that Controller. This can assist in identifying which Controller each Entity belongs when viewing Entities from across multiple Controllers.
- **Themes:** Improved theme selection to allow selection of a colour scheme for supported themes.
- **Ribbon Search Bar:** Added a search bar to the ribbon in System Designer and GateKeeper to allow ribbon items to be easily searched for.



- **Alerts:** Added option to Alert Definitions to not execute the 'Retriggered' Action when the Alert is restored.
- **Alerts:** Added new 'Maximum Activations' and 'Maximum Outstanding Alerts' options to Alert Definitions.
Maximum Activations limits the number of times a single Alert can be retriggered. Once the configured value is reached, the Alert will no longer be retriggered and future retriggers of the Alert will be ignored. This option will be automatically set to 500 by default on updating systems.
Maximum Outstanding Alerts limits the maximum number of un-finalized Alerts in the system for the Alert Definition at any one time. Once the configured value is reached, no further Alerts will be generated for that Alert Definition until the outstanding Alerts are finalized. This option will be automatically set to 500 by default on updating systems.
This feature helps prevent "runaway alarms" from consuming excessive system resources and valuable operator time.
- **License Manager:** UI improvements to make relevant information on licensed features and client seat usage more visible.
- **Review List:** Commands for Entities associated with a Review Record can now be performed directly from the context menu of the Review in the Review List.

- **Send Action:** Actions can now be directly sent as either an Assert or a Deassert by simply pressing the corresponding button, rather than having to change a dropdown value, in the Send Action dialog.
- **Ekotek RTLS Integration:** The unassociated hardware dialogs now show all known hardware of the selected type, allowing all existing hardware associations to be managed from this dialog.
- **Ekotek RTLS Integration:** Users can now be to assigned Repeater hardware in addition to an Area or Location, allowing for alarms triggered from Repeaters to be viewable on Schematic Maps.

Issues Resolved

- **User List:** Resolved issue resulting in sorting by and filtering on the 'Credentials' and 'Permissions Summary' columns in the User Entity list not working.
- **Guard Tour Summary:** Resolved issue resulting in colouring of rows not being applied when printing a guard tour summary's steps.

Important Notes

- V20 firmware is recommended for the best experience using V20 software.

Notes For REST XML Technology Partners

- Changes have been made to the way Custom Field Values are serialized in the REST XML interface. See the Generated REST XML Documentation's 'Compatibility Notes' for further details

BUG-FIX RELEASE (v 19.1.4)

April 2020 - 19.1.4

Issues Resolved

- **Controller Data Sync:** Improved & optimized the 'disallow controller changes' data-sync mechanism.
- **User Access Report:** Resolved potential error when running User Access Reports when logged in as an Operator with an Operator Type with insufficient permissions.

Improvements

- **Apartments:** Can now have numbers greater than 255. NOTE: Integriti Controller Firmware v19.1.3.37707 or higher is required to make use of this change.

BUG-FIX RELEASE (v 19.1.3)

March 2020 - 19.1.3

Issues Resolved

- **Cyrillic Character Support:** Resolved issue that resulted in Cyrillic characters in Entity names showing in Review as '?'.
- **KONE Access Integration:** Reduced the number of simultaneous active connections the Kone integration has to Kone at any one time. This reduces the required number of Kone connection licenses required for the Kone integration to be used. The Kone Access Integration requires at least 3 Kone connection licenses to be present in the Kone system for the integration to function correctly.
- **KONE Access Integration:** Changing the Expiry Date/Time of an Integriti User now correctly updates the Kone Access Right Expiry.
- **KONE Access Integration:** Resolved issue that resulted in the Kone integration being unable to sync the re-assigning of a Card from one User to another
- **Control Workstation Task Action (Play Sound):** Resolved issue that could result in parts of the GateKeeper UI not updating correctly when multiple Control Workstation Task Actions that play sounds are triggered in quick succession on the same Workstation.

BUG-FIX RELEASE (v 19.1.2)

March 2020 - 19.1.2.15837

Issues Resolved

- **Editing Lists:** Resolved issue that could result in items being unintentionally removed from a List (Door List, Area List, etc) after editing the list from a Controller keypad.
- **Human Readable Report:** Resolved issue resulting in the Human Readable Report not running for many Controllers.
- **Permissions Report:** Resolved issue where having multiple identical qualifiers could result in rows being removed from the report.
- **Challenge Response:** When a Location is full, access requests are now automatically denied.
- **Review:** Direct Entry Cards are now correctly associated with Access events.
- **Photo ID:** Resolved issue that could sometimes result in the error 'A generic error occurred in GDI +' being shown when attempting to print a Photo ID.
- **Muster View:** The Count field now has the correct value when printing Muster Views.

BUG-FIX RELEASE (v 19.1.1)

December 2019 - 19.1.1.15582

Improvements

- **RTLS CCTV Improvements:** Users now have their associated Area/Location automatically updated as their RTLS position changes. This allows CCTV footage to be shown directly from a User from all of the cameras associated with the Area/Location that their RTLS position shows them as being inside of.
This can be configured by placing the Areas/Locations on a Schematic Map as Shape Elements covering their positions relative to the RTLS system, then pressing Auto-Allocate Positions to save the Area's/Location's position data. Once this is done, Users will automatically be moved to the Area/Location their current RTLS Position falls within as their position changes, automatically associating the Cameras associated with that Area/Location with the User, until they move to a new Area.
- **Alerts:** When grouping Alerts with a source of Review Filter by a Format String, all empty results of the format string are now automatically grouped, rather than always creating new results.
- **Muster Report:** Muster reports now have the option of selecting Locations and Muster Locations in addition to Areas and Muster Areas.
- **Time On Site Report:** Added support for Lift Access when using a Processing Mode of First/Last Badge.

Issues Resolved

- **Finalizing Alerts:** Resolved issue where Alerts could sometimes not be finalized after the triggering Entity was deleted.
- **Review:** The Review list no longer automatically un-pauses when selecting a record.
- **Invoke Integrated Device Task Action:** Resolved issue resulting in the configuration options not showing up for some Integrated Device command types when editing an Invoke Integrated Device Task Action.
- **Partitions:** Resolved issue where deleting partitioned Entities could sometimes result in Entities being incorrectly deleted from Controllers in other partitions.
- **Schindler Lift HLI:** Resolved issue resulting in Schindler Lift HLI Communication Handlers configured in Integrati v18 not working after updating Integrati without reconfiguring the Communication Handler.

Important Notes

- If using the Inner Range Mobile Reader Application, an update will be required in order to continue working with Integrati v19.1.1.

Notes For REST XML Technology Partners

- Changes have been made to the properties of User State in the REST XML interface. See the Generated REST XML Documentation's 'Compatibility Notes' for further details.

VERSION 19.1

November 2019 - 19.1.0.15471

Schematics Improvements

Viewer:

- **Element Labels:** Elements can now have a label shown about them positioned relative to the element (top / center / bottom, left / center / right). The contents can be customized in the element presenter, showing the linked item name by default.
- **Custom Hover Text:** When the mouse moves over map elements, useful information about the element can be shown. This information is customizable in the element presenter.

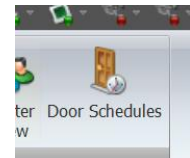
Editor:

The editor has several productivity improvements to accelerate the creation of high-quality schematic maps. More will come with future releases, but here are some highlights in this release:

- Management of elements in the Element List has been enhanced. Elements now have an icon for their type, an editable description, and visibility and lock control.
- Usability when inserting and editing of elements has been improved.
- Previewing of layer visibility

Door Schedules

When you know you need a particular room unlocked for an upcoming event, you can now create a “Door Schedule” in advance. Schedules can be managed and reported on from the new “Door Schedules” list in “System Designer”.



Schedules can also be managed from the context menu of any door in either “System Designer” or “Gatekeeper”. This functionality is also available when right-clicking a door from a schematics map.

D2	Locked		Door-User Activity Report
D3	Locked		Door-User Reference Report
D4	Unlocked		Configure Upcoming Schedules
D5	Unlocked		

Inactive Credential Used

When cards marked as lost / stolen / damaged are used, the system now creates new review events specifically for these events, and associates the user with the card review events.

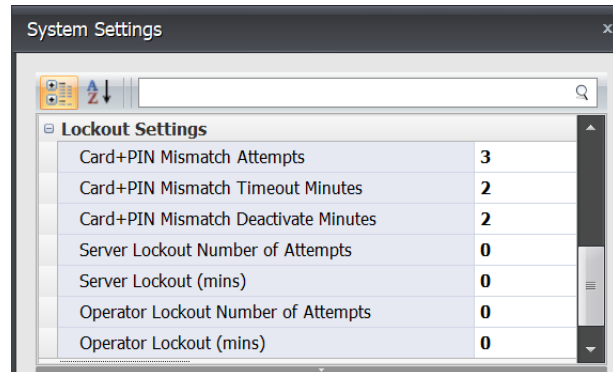
This allows the creation of Alert Handlers or automatic actions when a “blacklisted” card is used anywhere in the system.

Improved Lockout Capabilities

Configured in “System Settings”, operators and / or credentials can be temporarily locked out of the system when too many incorrect login / access attempts are made.

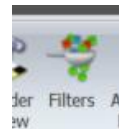
Card+PIN Mismatch activates when a user presents a valid card at a reader, but then enters an incorrect PIN.

Operator Lockout activates when an operator uses an incorrect password.



Powerful New Uses for “Filters”

Pre-Defined “Filters” have always been part of Integrati, but now filters can also be used in other areas of system programming.

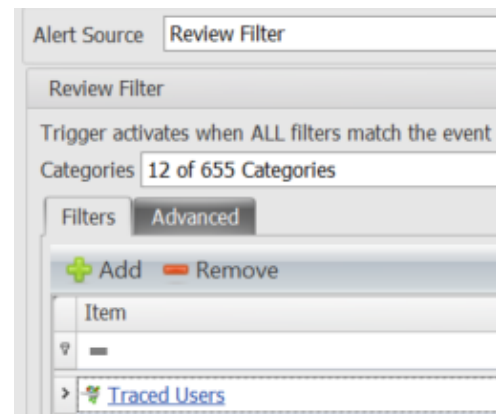


Improved Review Trigger Filtering

Review triggers (as used in Scheduled Tasks, Alert Definitions, etc) now allow ‘Filters’ to be referenced to identify the events to trigger on.

A filter may simply be a ‘Review Filter’ (perhaps specifying just access granted events), but additionally, a filter can narrow down events based on which entities the review event refers to.

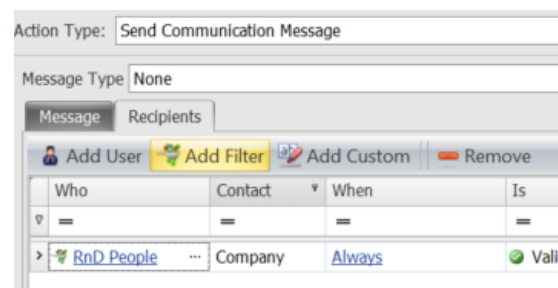
For example, a ‘Custom Field’ called “Under Probation” could be defined on “Users”, and a filter created to only display the Users with this option enabled. An ‘Alert Definition’ could then be created to trigger whenever a user under probation is denied access to a door.



Send Communication Message

Messages recipients can now be specified by referencing a ‘Filter’ instead of manually including each user.

This allows you to easily broadcast a message to all member of a department / group, or any other criteria you can filter on (perhaps just the people in a particular area).



Strongly Typed Credentials & 2 Factor Authentication

Credentials (formerly known as cards) are now identified (by the Credential Type in their Credential Template) as one of the following categories:

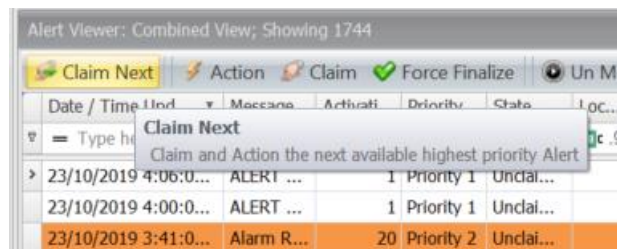
- Card
- Face
- License Plate
- Fingerprint
- Eye

Door / Lift Type programming can then require a specific type of credential, or even any 2 (or 3) types of credential. This allows many more access control scenarios to be defined, like requiring both card and biometric credentials to access a door or allowing facial recognition during the day for faster user processing but disabling that mode in the evening.

*This feature requires V19.1 Controller Firmware.

Other Improvements

- **Alerts:** The new 'Claim Next' button allows operators to quickly move on the next most important alert in Gatekeeper.
- **Alerts:** Alert Views are now able to utilize 'Display Themes' so the appearance of alerts can be customized for each site.
- **Alert Responses:** The workstation 'host name' and client type are now recorded against each alert response.
- **Control Workstation:** Reset Schematics Zoom (all maps / all 'default' maps).
- **Pin Mismatch:** Configure in "System Settings" - after a number of incorrect PINs, the card is deactivated for the specified number of minutes (requires V19.1 firmware)
- **Control Workstation Task Action** - Added Auto-selection logic to either only control client from context, or auto-select clients based on Operator and Workstation ranks
- **Integrations** - Added 'Restart Persisted Connection' command to plugins to allow restarting a connection from the context menu
- **Review List** - Exclude & Include Category menu options now apply to all selected rows
- **Review Events:**
 - Inactive card review events now reference the associated user
 - Server start-up now creates a review event
 - When any Integrated Device command is invoked an event is logged.
- **New System Warnings:**
 - New system warnings when low drive space is detected.
 - New system warnings when Servers are offline.
- **Assign System Inputs:** Automatic 'System Area' input programming can now use a different process group for door forced alarms
- **Web Interface:** The server-side session inactivity timeout (configured in Operator Type) is now enforced in the Web Interface.
- **Time On Site Report:** Can now include "Door Unlock" events when using the first / last processing mode.
- **Communication Messages:** HTTP Content can now be enabled for the message body.



- **CSV Import:** The ID (Address) property now works when mapped for Entities – and can be used as a key
- **CCTV:** Show Associated CCTV Footage on a User will now show the CCTV footage for that User's associated Area/Location
- **Task Actions:** When invoking an Integrated Device Command, the device can now be selected automatically based on the triggering context
- **Kone Access Integration:** Improved user interface and added compatibility with more Kone card formats.

Issues Resolved

- Resolved an issue that caused some review windows to incorrectly filter out all review.
- Filters – Collection Contains filters can now be saved

BUG-FIX RELEASE (v 19.0.1)

August 2019 - 19.0.1.15054

Improvements

- **Lift Integrations:** Schindler & Kone ACI now allow inspection / editing of the “service data”. This should only be done on instruction from Inner range support staff.
- **Kone ACI Integration:** Lift car allocation events can be associated to the Lift-Floor area.
- **Kone ACI Integration:** Configuration now uses drop down combo boxes.
- **Review Sender:** The ‘Remote Server’ can now be specified by either DNS name or IP address.
- **Filters:** Day of Week filters can now use “Any Of”
- **Card Enrolment:** SIFER enrolment station now supports CSN cards (using the Direct 88 format).
- **CCTV Export:** The status of a CCTV footage export is now displayed at the end of the export, to make it clearer if the export succeeded or failed.
- **Remote CS Connections:** The “Allow CS Remote Connection” license is no longer required to remotely administer small systems with Integriti CS (regardless of the Smart card level).

Issues Resolved

- **Schindler Lift Integration:**
 - Resolved an issue that caused deleted cards to stall user-sync.
 - Deleting users who are already deleted no longer causes an error.
 - User sync failures no longer stall data-sync (errors are logged to review)
- **Partitioned Systems:**
 - CSV Import now supports importing users into a partition.
 - Entities exported from systems (ie from CS) can now be imported into a partition.
 - Card ‘collision detection’ logic is now ‘Partition Aware’, supporting legitimate duplicates.
 - Partitioned entities inside sub-sites have their address ‘Short Name’ correctly updated.
 - Partitioned entities in global user permission rows no longer written to all partitions.
 - Partitioned programming referenced no longer incorrectly behave like global references.
- **CCTV Viewer:** The timeline now more accurately matches the current playback time.
- **CCTV Export:** Resolved potential errors exporting CCTV footage in some scenarios.
- **User Interface:** Improved UI responsiveness in the Edit User screen.
- **Alert Definitions:** The default Alert handler is now disabled.
- **Schematics:** Resolved an issue that caused Layers to hide some elements.
- **Control Workstation Task Action:** Improved performance of the Show Items option when the Task Action is triggered multiple times in close succession.
- **Review Windows:** Resolved an issue that sometimes caused no events to be shown.
- **Time Trigger:** Resolved issue resulting in the Start Time of a Time Trigger being lost when changing the frequency of the trigger in the editor.
- **Active Directory:** Resolved issue resulting in the error ‘The Server does not support the requested critical extension’ when attempting to perform an AD import on large Active Directory Databases (>~20,000 Users).
- **Active Directory:** Distinguished Names of Groups and OUs are now visible from the editor in the Active Directory Communication Handler.

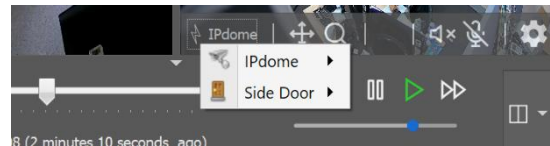
VERSION 19

June 2019 - 19.0.0.14739

New & Improved Camera Interface

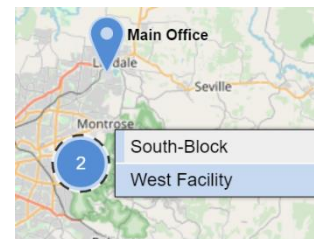
The CCTV camera interface has been completely overhauled, and now supports:

- Multiple standard layout configurations.
- Control Items associated with cameras directly from the video stream.
- Easily navigate with the timeline.
- Export short clips or snapshots to file or the Evidence Vault (requires integration support).
- Control PTZ tours directly from the video stream.
- Aspect ratio can optionally be enforced on a per camera basis.
- New layout options, including “N + Main” layouts that are designed to show many thumbnail camera streams, and allow operators to click on any of them to bring that camera to the Main large display.



Schematics

- **Map Group Clustering:** Zooming out now displays your buildings as “Icons”:
 - Isolated buildings are shown with names “location icons”
 - Zooming out further will group buildings into “cluster icons”
 - Icons turn red to indicate the presence of alerts
 - Clicking on a cluster shows a menu to jump to your chosen map.
- **Editor:**
 - Improved UI for the positioning of maps within a map group
 - Improved UI for rotating and positioning map elements



Evidence Vault

Evidence Vault is an interface that allows any file to be stored and retrieved for later use.

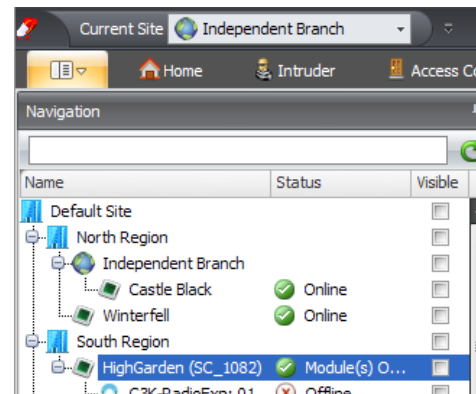
- **Cryptographic Fingerprinting:** Evidence is stored with MD5 and SHA-256 cryptographic hashes, so tampering with any evidence extracted from the vault can be detected.
- Compatible CCTV Integrations can store clips (or snapshots) directly into the Vault.
 - Footage associated to Alerts can be stored in the Vault automatically (for example via the ‘Save Associated Footage to Evidence’ action in the Created Actions), or manually from the context menu.
- Configure the storage location (UNC) in ‘System Settings’:
 - Only the Server requires access, so evidence can be secured, and won’t bloat your database backups.

Operator permissions give fine grain control over who can store or retrieve evidence items.

Partitioned Systems

Version 19 introduces “Partitioned Sites” allowing the creation of Users (and other ‘global entities’) that only exist within the ‘Partition’ they were created in.

- Create new ‘Partitions’ from the “Site Navigation Tree” in System Designer.
- Users in Integriti’s existing ‘Global Partition’ are still truly global.
- Choose your current “working site” from the new selector in the title bar.
- Partitions can contain multiple ISCs & IACs.
- Each ‘Partition’ can have its own local ‘User 1’.
- Card / PIN uniqueness is only enforced within a partition.
- Partitions are entirely isolated from each other.



For more information refer to the “Integriti Partitioned Systems Guide” located in the ‘docs’ folder.

*This feature requires a license.

High Level Camera Alarm Integration

Your integrated devices (Cameras / Intercoms / etc) can now trigger inputs in Integriti’s sophisticated intruder detection capabilities.

- Configure in integrated device properties.

Communication Handlers

- New **Kone ACI HLI**: Sync users and access events with Kone’s next generation lift ACI platform.
- New **ModBus TCP Slave**: Allows 3rd parties to use the Modbus protocol to monitor and control Doors / Areas / Auxiliaries & Inputs.

Alerts

- Pre-Defined Alert Responses allow operators to more efficiently close issues, and enforce consistency to enable better reporting.
- All Alert Sources now support “Finalize only when alarm conditions are restored. Additionally, ‘restore’ event can be either counted (existing functionality) or a single restore can clear many triggers.
- New review ‘Categories’ filter for the Intruder Events Alert Source – This allows the exclusion of some XMIT categories, or states – for example to exclude Tamper Events.

Quality of Life Improvements

- **System Warnings**: New system warnings when low drive space is detected.
- **Control Workstation**: Reset Schematics Zoom (all maps / all ‘default’ maps).
- **Control Workstation**: Can now ‘Load System Layout’.
- **Operator Compliance Restrictions**: “Ensure Maximised” removes the ability to “restore down” the main GateKeeper application.
- **Workstation & Server** entity lists can now display their last know OS and .NET versions.

BUG-FIX RELEASE (v 18.2.3)

May 2019 - 18.2.3.14706

Issues Resolved

- **HID Mobile Credential Integration:** Fixed an issue that prevented assigning HID Mobile Credentials when using the counted license.
- **Controller Data Sync:** Fixed an issue that could result in Controllers being unable to sync data while connected to Integriti.
- **Operator Challenge Response:** Improved processing when multiple 'Challenge Definitions' match an access request (ie. are for the same door):
 - All open 'Challenge Windows' now receive new requests.
 - All open 'Challenge Windows' are now updated by any relevant response.
- **Operator Challenge Response:** Challenges can now be actioned from the 'Past Challenge Viewer' if performed before the challenge times out.
- **Operator Challenge Response:** Multiple Challenge Definitions can now be viewed simultaneously in Integriti Gatekeeper.
- **Card Parity:** 38-bit cards with high card numbers now have their parity calculated correctly.
- **Day of Week Filters:** Resolved an issue that prevented review triggers (Scheduled tasks / Alert Definitions / etc) containing 'Day-of-week' filters from working correctly.
- **Format Strings:** Where previously invalid tokens using the new curly brace format in a format string were left in the resulting text, invalid tokens are now removed. This will affect format strings used in such places as Alert Response Plans, Log Review Task Action, Challenge Definitions, etc. NOTE: People using the legacy '%' syntax should update their format strings to use the new curly brace notation.
- **Format Strings:** Added support for entering literal curly braces by entering '{{' or '}}'. If any single curly braces are currently being used as literal curly braces in a format string, they should be replaced with the new double curly brace notation.
- **Active Directory User Sync:** Fixed an issue that resulted in not some Active Directory Groups being missing from the 'Groups To Monitor' property of the Communication Handler on larger sites.
- **Schematics Map Viewer:** Fixed potential issue that could result in the Status Summary or Command panels not being visible or resizable.

BUG-FIX RELEASE (v 18.2.2)

March 2019 - 18.2.2.14467

Issues Resolved

- **Arm Area Window:** Pause button now moves when the window is resized.
- **Reports:** Fixed an issue that prevented operators without a 'Name' from running reports.
- **LPR:** License plates now support Unicode characters.
- **Programmed Inputs List:** Improved performance on large systems.
- **Alerts:** Resolved an issue that caused the 'Escalate Alert' task action to occasionally not work.
- **Schindler HLI:** Incompatible cards no longer interrupt user card syncing.
- **Schematics:** Copy / paste / delete 'Edit mode' keyboard short-cuts no longer have any effect in 'View Mode'.
- **Audit:** Resolved: 'Show History' occasionally showing the history of another entity.
- **Photo ID:** Fixed an issue that caused barcodes to be printed the same for every card, when printing cards for multiple users at the same time.

BUG-FIX RELEASE (v 18.2.1)

February 2019 - 18.2.1.14187

Issues Resolved

- **Schematics Editor:**
 - Status bar show position and size.
 - Resolved some grouped item visibility issues.
- **Schematics:** Fixed Single Click Actions from touch screens.
- **Guard Tour:** Resolved an issue starting tours created in V18.2.0.
- **Muster View:** Windows can be opened in a new Tab.
- **Sounds:** Resolved an issue that caused Alert sounds to be lost during a version upgrade.
- **HID Mobile Credential:** Updated to current HID production URL.
- **CS Edition:** Resolved issue that prevented customizing list views (ie adding new columns).
- **Panel Connectivity:** Fixed an issue that could potentially cause controllers to stop data-sync & control functionality on networks with occasional very high latency.
- **Lists:** Reduced flicker in review & other rapidly changing lists.
- **User Editor:** Fixed an error that occurred when exporting some User photos.
- **Display Themes:** Improved Display Theme colour blending.
- **Commissioning Report:** Sims II group number is now correctly reported.
- Resolved an issue that caused custom enhancements to not compile on some touchscreen equipped clients.

VERSION 18.2

November 2018 - 18.2.0.14056

Schematic Maps & RTLS

New “Map Groups”

See all of your schematic maps as one giant interactive vector map.

- Zoom in on individual maps for high detail, or zoom all the way out to see a helicopter view of your entire installation.
- Multi-Level complexes can overlay maps, allowing you to choose the level you are interested in.
- Position maps over a worldwide “street view”
- Auto-rotate – as you zoom in on a particular map, it will automatically re-orient to the map’s “design orientation”



Schematics Vector Editor - Schematic maps are easier than ever to create, as the new Vector Engine is now used when designing your maps for a true WYSIWYG experience.

Alerts & RTLS

Applying co-ordinates to entities in the system allows Schematic Group Viewers to automatically zoom in on the relevant areas.

Co-Ordinates can be applied to Doors, Areas, Inputs, Users, Alerts, Cameras & Intercoms by Integrations to 3rd party providers.

Once a map has been “located” (by placing it on a map group) you can easily update the geo-location for all items on the map from the Map editor with the new “Auto Allocate Positions” feature.



Alerts automatically inherit the RTLS geo-location of the items that triggered them. This enables the Alert to be visualised as an Icon on the appropriate map. (choose an element presenter in map properties).

Live Muster View

Provides an interactive view of where everyone is during an evacuation - Similar to the Muster feature of the Mobile Reader Application.

Configure “Muster Views” from System Designer
-> Access Control -> Muster View.

5 User/s Not In Muster			6 User/s In Muster	
	Current Location	Last Updated	In View	
	super secret safe	13/11/2018 4:1...	Name	Count
ER	cinema	1/11/2018 7:44 ...	backYard	4
IM	L9 AV	21/12/2017 11:...	Off-Site	2
1	L9 AV	12/12/2017 3:1...		
	L9 AV	23/06/2017 2:4...		

Use a “Location List” to determine which areas or locations are included in the the view, and the “Muster Point” check box in Area & Location Programming to indicate which areas are “safe”.

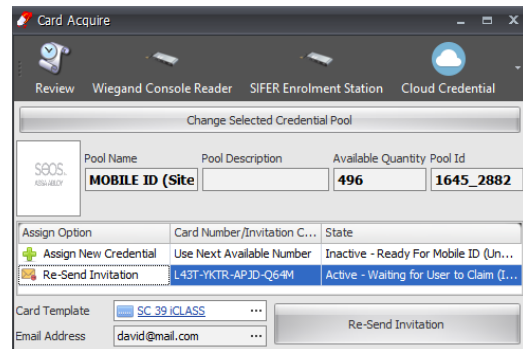
HID Mobile Credentials

Allocate and manage HID Mobile Credentials from within the Integrati User Editor.

Configure the new “Cloud Credential Service” to:

- Monitor the progress of allocated credentials
- Send customised Email / SMS Invitations to Users

*This feature requires a license.



REST / XML 3rd Party Interface

- New Session Cookie (when security is enabled):
 - The session cookie validity is configurable from 5 to 60 minutes
 - Allows a significant performance improvement
- Control License now allows “Virtual Card Badges”

Active Directory Integration (Users)

- New editor makes working with large AD's much easier.
 - A Tree makes choosing OU filters or AD Groups much easier.
 - Test import now shows any attributes that contain no data at the bottom.
- Improved support for Group based filtering. (Including the AD “Built-in Groups”)
- When configured to sync Cards, new cards are now created in the “Import Settings -> Default Site”.
- Performance improvements.

Display Themes

Customising the look of Integrati lists is easier and more powerful than ever, thanks to a “Display Theme” overhaul:

- Customise either the whole row, or just the field you choose.
- Rules can change every aspect of a row or item:
 - **Font**, including bold / italic font modifiers
 - **Colour**, separate foreground / background colour.
 - **Flashing**, make important alerts / states really stand out!
 - **Gradients**, an optional 2nd background colour allows gradients
- Increase (or decrease) the size of specific rows.
- Preview how your rules will look while you are creating them:

Rules				
<div> + Add - Remove ↺ Duplicate </div>				
Property Name	Operator	Property Value	Properties To Highlight	Overview
State - Summary	Contains	override	State - Summary	Flashing, Text & Back Colour
State - Door State	Any Of	Unlocked, Un-Locked...	State - Summary	Back Colour, Bold
> Name	Contains	important	Entire Row	Font=Arial, Size=180%
Name	Contains	auto	Entire Row	Back Colour, Font=Arial

Remember: ‘Filters’ can use a specific ‘Display Theme’

Alerts Workflow Improvements

- **“Control WorkStation” Action:** Added the option to specify where the dock window for items shown should be opened. It is now possible to select from:
 - Opening the item in the current ‘default’ window if one is available, otherwise creating a new ‘default’ window
 - Using an already open window for the same type of item, otherwise opening in a new window
 - Always opening in a new window
- **“Control WorkStation” Action:** Added the ability to show entities from the context of the action, rather than only showing the explicitly selected items. This means that the CCTV footage or Schematics Map shown will dynamically change depending on which entities the context of the action references, only showing the relevant footage/map each time.

Operator Permissions & Layouts

- **Layouts:** Added the ability to select a default dock window to use for showing CCTV footage and Schematic Maps from context menu commands, rather than always opening in a new tab. This allows the ‘Show Video’ and ‘Show In Map’ commands to always show the corresponding item/s in a selected Window, which can be stored as part of a layout, allowing multiple items to be shown one after the other, all in the same window. The default window can also be used to ensure items opened using the Control Workstation command always open in the same location.
- **Operator Restriction:** Added the ability to prevent an Operator Type from being able to change the default sorting of Entity Lists. This allows information to be laid out in a set format, with priority items always showing at the top.
- **Operator Restriction:** Added the ability to prevent an Operator Type from being able to apply filters to columns in Entities Lists. This ensures that no Entities can be hidden from view due to a filter being applied to the list.
- **GateKeeper Restriction:** Added the ability to prevent an Operator Type from closing GateKeeper, ensuring the software is always left open.
- **Restore Layout:** Added a button to the ribbon to easily restore a layout back to its saved settings, reverting any changes made to the layout since it was last saved.
- **Operator Restriction:** The new ‘Can Factory Reset Layout’ option can prevent operators from unloading their assigned layout.

Quality of Life Improvements

- **Operator Types Editor:** Type categories are now organised by their location in the System Designer ribbon, and can be manually searched by name when looking for a specific type. A new “Top Level” check box makes it easy to change all settings.
- **Guard Tour Editor:** A tree view (similar to the “Running Tour” view) makes it easier to create groups in Guard Tours.
- **Guard Tours:** Operator ‘View permissions’ on Guard Tour Definitions now apply to the running Guard Tours window.
- **Scheduled Tasks:** Next Time Trigger column is now a DateTime instead of a string
- **Triggers:**
 - All Triggers: Added an optional “TimePeriod” qualifier (with invert bit)
 - Review / Door/Area Triggers: Added User match mode to allow them to only work for some users.
 - Using DoorLists in Door / Area Triggers now required only a server restart to pick up changes in door list programming (as opposed to re-editing the trigger).

- The ability to specify just access granted / denied / or either to Door Area Triggers
- **Door Editor:** added support for 2 badge arm modes, and allowed editing from the arm mode from within the reader edit fly-out.
- **Timed Door Unlock:** When unlocking a door from the software, the prompt asking for the unlock duration now defaults to the unlock time for the door, (or 5 seconds if a time is not specified)
- **Reports:** The new "X Reference" Report shows direct relationships between entities in the system - for example, which users have been assigned certain permission groups.
- **Email Sender:** Emails can now be sent in HTML format
- New License Plate Recognition:
 - **LPR: Coalesce Ambiguous Characters** – Optionally makes LPR more reliable by treating 1/I or O/0 as the same char.
 - **LPR: Ignore Case** – Optionally makes LPR case insensitive.
 - **'Associated Door'** now correctly identifies the reader in all cases.
- Improved editor & display of 'Notes' Custom fields.

Issues Resolved

- **Rest/XML:** Resolved issue where multiple concurrent requests could occasionally return an invalid password error.
- Reduced flickering in live windows on busy systems (particularly review).

BUG-FIX RELEASE (v 18.1.2)

August 2018 - 18.1.2.13952

Issues Resolved

- **Schematics:** Resolved a problem opening maps containing items they have no permissions to see.
- **Schematics:** Resolved issue that caused flip / rotate transforms to not always be applied in view mode.
- **Schematics:** Resolved issue that caused groups containing icons to be hidden.
- **Pager Message Sender:** Added "OK" as a valid message ACK. Custom ACK messages can now be configured.
- **Communications Handlers:** Any handlers that are stopped due to errors are now automatically re-started.
- **Review:** Resolved issue when selecting categories in review filters, or when filtering live review to "exclude category".
- **System Warnings:** Removed the incorrect license warning when more than 100,000 users are in a controller with a Level 5 User expansion Kit.
- **Integrati Mobile:** Review dates are now in local time.
- **Entity State:** Fixed bug that caused state changes to be sent from the controller on the first connection after a "default" even when the controller "Prevent State Syncing" option was enabled.
- **EKOTEK:** Resolved issue that caused user state to not be created.
- **Permissions Editor:** Resolved an issue that caused permissions editors to display the error message: "Year, Month and Day parameters describe an un-representable DateTime".

BUG-FIX RELEASE (v 18.1.1)

July 2018 - 18.1.1.13342

Mimic Viewer

The Integriti Mimic Viewer is designed as a stand-alone installation of Integriti that maintains its own connection to an Integriti controller. This connection can be made alongside an Integriti Professional connection, via Ethernet or serial. Primarily, the Mimic Viewer is intended to allow local on-site schematic maps to be displayed that don't rely on an Integriti server that is located off-site.

For setups where a centralized Integriti Professional server is located off-site, if connectivity to the central server is lost then the controller will still function normally, but any software clients that are logged in will disconnect. Some of these software clients could be used to show fire alarm, duress or other site information on a monitor on the wall that are critical to OH&S. If this is the case, then the Mimic Viewer product is an ideal alternative that does not rely on internet connections.

For more detailed information about the Mimic Viewer, including usage examples and how to install and configure it, see the Integriti Mimic Viewer programming manual available on the Technicians Downloads section of the Inner Range website.

*This is a stand-alone Integriti product like Professional and Express and hence requires its own product activation key.

Issues Resolved

- **Card Printing:** Resolved issue that sometimes resulted in User Details not being shown when printing a Card.
- **Site Defaults:** Resolved issue that caused the Site Time and Review Playback Buffer Site properties to not be inherited from parent Sites when not set in a child Site.
- **Guard Tour:** Fixed potential error when showing CCTV footage for a Guard Tour in a new tab.
- **Guard Tour:** Added ability to modify whether or not a Group Step is ordered.
- **System Performance:** Optimisations to system load times.
- **Integriti Mobile:** Fixed incorrect door states shown for DOTL and Door Forced states.
- **Review:** Review from foreign Controllers now correctly translates the names, and references the "other" Controller's items.
- **EkoTek Listener Service:** Fixed bug resulting in received location updates not being generated.
- **EkoTek Listener Service:** Fixed issue preventing associating multiple Repeaters with the same Area/Location.
- **EkoTek Listener Service:** Fixed an issue where System Warnings were not removed from Entities when these alarms were claimed in the EkoTek software.
- **EkoTek Listener Service:** Fixed issue that could result in 'Multiple Entity' problems stopping the service rather than just displaying a warning.
- **EkoTek Listener Service:** Claimed/Raised alarms caused by Repeaters now only display the Repeater name once.
- **REST/XML Interface:** Fixed issue that caused the DateTimeGenerated field to be overwritten with the current insertion time. This now only happens if the DateTimeGenerated is more than 1 day in the future.

- **Communication Services:** Fixed issue that prevented the IPXmit, Review Receiver and Review Sender Communication services from being able to start again after being stopped by the software without a server restart.
- **Schematics:** Added support for importing SVG files containing foreign elements.
- **Schematics:** Fixed potential issue resulting in some elements not showing up on a map until a state change occurred.
- **XML Import:** Fixed potential issue importing items into Integrati that could result in properties not getting set correctly.
 - **NOTE:** Items must be re-exported to resolve this issue.

Feature Updates

- **UI Update:** Resolved several issues when using high DPI displays.
- **Audit:** Changes to Integrated Devices and Communication Handlers are now audited.
- **Guard Tour:** Improvements to current step overview in the Guard Tour Summary.
- **Firmware Update:** Software now provides a warning when attempting to update a Controller's firmware to a version newer than the software version.
- **Operator:** Last Login and Login Count are now stored for Operators.
- **Schematics:** Added the ability to cancel setting an SVG file and a notification when taking longer than expected – The 'Esc' key can now be pressed while the image is being rendered to cancel the import (the progress form must be focused for this to work)

NEW IN VERSION 18.1

April 2018 - 18.1.0.13171

Schematics Animations

Make your maps come alive with flashing text and animations!

Default Element-Presenters have been updated to include visual indications when alarm / tamper states are active.

This can be customized in the element presenters "Animation Settings".

Animations allow a 2-frame animation to be applied separately to the "Shape", "Icon", and "Label" formats within an element presenter (on conditions of your choice). Allows elements to flash or pulse, and also change size.

Guard Tour

"Guard Tour" helps you organise, log, monitor and execute routine security tasks, improving safety, security and accountability for your staff.

- **Real Time Tracking:** When personnel are conducting their predefined tasks, their progress can be monitored in GateKeeper.
- **Overdue Alerts:** When combined with Integriti's powerful Advanced Alerts engine, email / SMS / popup-windows and more are all possible to ensure staff safety.
- **Flexible Grouping:** Tours can be broken down into groups of sub-steps, and optionally completed in any order. This allows guards to randomize the order of activities (making patrols more difficult to predict by would-be attackers)
- **Accountability & Dispute Resolution:** A comprehensive audit trail easily settles disputes about what patrols (and parts thereof) have been completed.
- **Automation:** As the Guard progresses through the tour, tedious tasks (like re-arming the cleared area) can happen automatically.
- **Scheduling:** Guard Tours can be started manually or as part of a pre-defined Schedule
- **Reporting:** With the reports module, you can always know which patrols were completed each week.

'Guard Tour Definitions' are created by the system integrator in 'System Designer', specifying in great detail what tasks should be performed in what order, and what should happen when they are completed (or not completed in the prescribed time).

Operators can the Start a Guard Tour manually from Gatekeeper, or the scheduler can automatically start Tours.

*This feature requires a license.

Alerts

The "Finalized Alert" can now show more information in the 'Alert Summary' about the history of an alert (including any notes an Operator may have left in responding to an alert)

This Data is also available to reports on Alerts.

The appearance of Alert Views can now be customised with Display Themes, and viewed with 'Filters'.

*Alerts Definitions can now customize the formatting of the message (previously was just the review text).

*Alerts created with Review Triggers can now specify a separate review filter to be used as a 'restore'

*Requires an Advanced Alerts license

64 Bit Integration Server

The new 64-Bit integration server allows new integrations to utilize expanded memory and resources available on 64-bit servers.

The existing 32-bit Server is still installed as well to support older integrations that require a 32-bit host.

Integriti will automatically load any plug-in with the correct Server.

Cards (Expiry & Temporary Replacement):

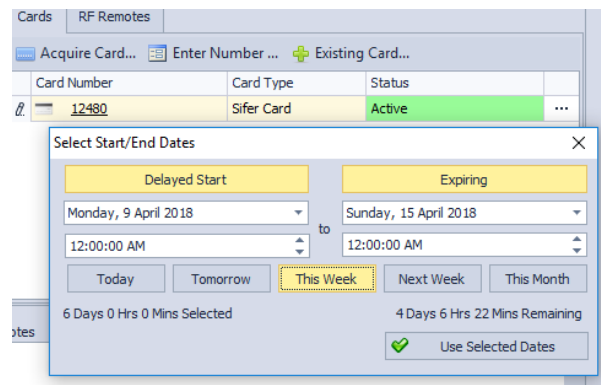
Individual Cards can now be expired (or given a future start date)

Convenient UI shortcuts facilitate common tasks, like when a User needs to be given a temp card for the day.

These are available from the User Edit Screen.

Cards now have new Status types so you can easily know / report on which cards are temp cards.

Cards also reference which card they are replacing, making it simple to track down the history of any cards.



More Powerful Custom Enhancements

Inner Range Professional services have more power than ever in being able to customize the Integriti platform to individual Customer requirements.

OnSave Triggers

Customized Context Menu Commands

*Custom Enhancements are quoted by Inner Range professional services on a per job basis.

Mobile Reader

With "Mobile Reader", your Security Officers can easily verify personnel credentials, and perform evacuation mustering from their compatible mobile device.

Credential Check: Simply swipe a user's access card instantly see the associated users on file photo, and relevant details. Guards can then activate (or de-activate) the swiped card on the spot.

Mobile Muster: In the event of an emergency, Security Staff can easily see who is still in danger (and where they are), as evacuating staff swipe at either fixed muster points, or directly at the "mobile reader".

*This feature requires a license.



EkoTek Listener Communication Service

Monitor and track the location of assets and personnel with the new EkoTek Integration.

*This feature requires a license.

Quality of Life enhancements

- New **Review Filters** can now be easily created from existing windows
- **Schematics** can now handle a wider variety of SVG files.
- **LPR** – The License Plate Recognition feature now allows more control over which reader is used for LPR.
- **Time-On-Site Report:** A new mode allows processing based on 'Location Changed' review (as opposed to Access review)
- The **REST / XML** interface Documentation is available at <http://127.0.0.1/doc/XmlApiDoc.html> (when licensed and configured)
- **Reports:** Global parameters have now been added to reports to allow the report designer access to information like:
 - Who ran the report
 - Who / When the report was last edited
 - The date range of the report
- **Show on Map:** Right click on any item in a list, and you can easily open the schematics map this item resides on.
- **Grant Amnesty:** Right click on a user and choose 'Grant Amnesty' to easily resolve anti-passback issues.
- **Schindler HLI:** Custom fields can now use more 'Custom Field Types' (for example ComboBox can now be used where previously only a Text field was allowed)

Bug Fixes

- **Qualifications:** fixed an issue that caused qualifications with multiple triggers to sometimes fire all triggers actions when any trigger happens.
- **Schindler HLI:** Fixed bug that caused inactive cards to be sent to the external system as active cards

BUG-FIX RELEASE (v 18.0.4)

March 2018 - 18.0.4.12783

Issues Resolved

- **Schematics:** Fixed issue that caused initial state to show incorrectly, (when many state changes occur during map load)
- **Application Layer HA:** Improved Server to Server communication security & robustness.
- **Scheduled Tasks:** Fixed issue that caused some tasks to no longer be editable (if created in older versions).
- **Photo ID:** Fixed an issue that caused long labels with black text, using the “best fit” sizing option to sometimes be truncated.
- **Photo ID:** Fixed issue that caused ‘delete’ to fail for some card designs.
- **Workstations:** New properties let you see when each workstation was last used (from system designer) and they can be deleted. Ensure no Task Actions (schedules / Alert Definitions / etc) reference a workstation before deleting it.
- **System Performance:** Optimised the System Designer Tree display of hardware state.
- **Active Directory Integration (Users):** Increased performance of user sync and fixed memory leaks.
 - **Note:** Upgrading customers may still have configurations that manually specify the ‘key’ field. This is no longer the recommended way. A manual key incurs significantly more performance overhead than using the newer (introduced in V4.1) ‘built-in’ custom field key. To change an existing system to use the newer method:
 1. Ensure a full sync has been completed with the newer software, and that all your AD Users have a correctly populated ‘cf_ActiveDirectoryGuid’ custom field.
 2. Ensure none of the column mappings have the “key” column checked. (this column is now hidden by default, it can be found by right clicking in the column headers -> Column Chooser.)

BUG-FIX RELEASE (v 18.0.3)

January 2018 - 18.0.3.12579

Issues Resolved

- **Date/Time Editor:** Fixed an issue caused date editors (like User Expiry).
- **Gatekeeper:** Fixed label on Review Group in Window Tab.
- **Web Interface:** Resolved issue that caused the "Use HTTPS" option to not work.

BUG-FIX RELEASE (v 18.0.2)

January 2018 - 18.0.2.12543

Issues Resolved

- **REST/XML:** Fixed an issue that caused some items to not be able to be deleted by Address.
- **Controller Connect Dialog:** Fixed occasional issue that caused the 'Connect Manual' window to not show up.
- **Reports / Filters:** 'System Warnings' can now be filtered / reported on.
- **SIFER enrolment station:** Made confirmation BEEP's louder when cards are detected.
 - SIFER large LED indicates the connection status:
 - White (SIFER has power, but is not connected)
 - Blue: The Acquire Card dialog is open and communicating with the reader.
 - Green (momentary flash) indicates a card was read.

BUG-FIX RELEASE (v 18.0.1)

January 2018 - 18.0.1.12501

Issues Resolved

- **User-Door Recent Activity:** Fixed an issue that caused the User Door recent activity window to sometimes show no results.
- **Operator Permissions:** Review events are only visible to operators who can 'see' the source 'control module'. This has always been the case, but is now also enforced from the Web Interface and Reports.
- **Operator Permissions:** Door Override commands can be hidden via the new 'Send Override Commands' option in operator types.
- **Schematics:** Resolved an issue that caused clients that updated via 'Auto-Client-Update' to not be able to render maps.
- **Schematics:** Fixed issues in the 'Bulk import maps' feature.
- **Schematics:** Fixed an issue that caused some clients to freeze when changing item colours in design mode.
- **User Qualifications:** Credit deductions are no longer Audited by default.
- **User Qualifications:** Fixed a bug that caused all credit deductions to be actioned whenever any single trigger activated.
- **Web Client:** Removed access to entity types Operators are not allowed to see (based on their permissions).
- **Web Client:** Fixed issues in list sorting / filtering
- **Web Client:** Fixed PIN editing of users
- **Web Client:** Custom fields are now editable
- **Web Client:** Fixed a bug that allowed the created timestamp to be overwritten

VERSION 18

January 2018 - 18.0.0.12448

Vector Schematics

An all new vector-based schematics rendering engine allows maps to smoothly zoom in & out forever while always looking crisp and professional.

* See the section “Vector Schematics – New Features in detail” for more information on the Improvements to Schematics.

Review Event Log Improvements

The new ‘Review DBs’ list lets you see and manage where your review records are.

Review queries are cancellable, and show progress.

Introducing review ‘Categories’ (formally known as Transitions). Filters and reports now let you easily select categories and sub-categories when looking for review

All external Databases are now created with a ‘date range’, this is encoded in the name, as Year_Quarter. For example, ‘IntegReview__2017_Q3_0’ will only contain review records that were **generated** in July, August, September or 2017.

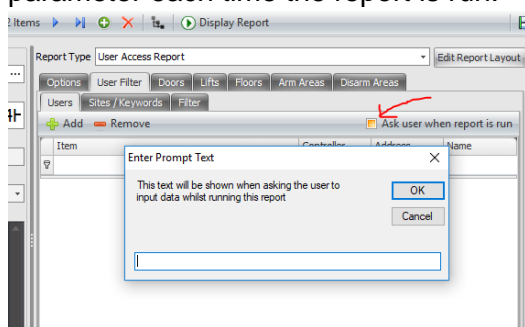
New Database clean-up actions can now efficiently ‘obliterate’ all old review in accordance with your data retention policies.

The Application Server now has a **Review Ram Cache** to improve performance, the size of this cache can be configured in Administration -> Servers.

Interactive Reports

Each filter / property of a report can now prompt the user running the report for a value each time the report is run.

This means low level operators no longer need the rights to edit reports to just change a single parameter each time the report is run.



Operator Action Confirmation

Specific Doors / areas / list of the above can now be configured to prompt for a confirmation before control is allowed.

Lists must be explicitly configured for confirmation (it does not happen just because it's items are configured as such)

This is configured with the new ‘Requires Operator Confirmation’ option in entity programming.

Application Layer High Availability

Customers who require Enterprise grade reliability can now run multiple instances of the Integriti Services at the same time.

Controllers / Clients automatically connect to available nodes to ensure an “always on” experience. This feature requires additional licensing and is quoted on a per site bases. Contact Inner Range Professional services for more information.

Licence Plate Recognition

Licence Plates can now be used as credentials when used with compatible CCTV Systems.

*This feature requires a license.

Sky Reader – Mobile Application Support

Guards can check the validity of credentials from their Android device (IOS coming soon). When valid cards are presented to the phone, an image of the PhotoID attached to the card is immediately shown.

IP XMIT Service – New Communications Handler

When enabled, all XMIT review records are transmitted to the connected automation system.

This feature requires no additional controller support, and is in addition to the native alarm reporting capabilities of the controller. This means if the controller has an alarm reporting comms task, and this feature is enabled, 2 messages would be sent to the control room for each alarm / restore.

*This feature requires a license.

Quality of Life enhancements

- Communication Handlers & Integrations can now have a “Run Mode” so they can be easily disabled, and can have a Server affinity.
- Communication Messages now have additional **local** ‘Created’ and ‘Sent’ times. (in addition to the existing UTC ones)
- User Access Report - Renamed "On Areas" and "Off Areas" tabs to "Arm Areas" and "Disarm Areas" respectively
- Report Configurations - Added Display Names, Categories and Descriptions to fields in Reports that didn't previously have one.
- Format Strings: Added new pre-sets for numeric and date datatypes
- XML / REST Interface can now perform any ‘control’ action by POSTing the XML.
- XML / REST Interface can now perform queries by POSTing an XML filter.
- XML / REST Interface can now retrieve users without pictures by specifying **User_nolimages** as the type name.
- Commands invoked by operators from Edit Dialogs can no longer be ‘accidentally’ pressed when (for example) double clicking through a hyperlink. If the button is pressed within a second of the window coming to the foreground, a confirmation is required.
- Active Directory/CSV Import Transformations - Gave the option to limit search results to a particular site (and its child sites) for the Name Lookup Transformation
- Enrolling / presenting SIFER cards at a SIFER Enrolment Station now saves the CSN with the card.
- Server heartbeat frequency is now configurable
- Diagnostic ‘Log Viewer’ now has a handy “Zip for Export” button.
- LAN modules now have a Battery Life property (years). The system automatically sets the ‘Battery Needs Replacement’ value to true when it is too old, based on the programmed installation date, and the configured ambient temperature.

- Send user Messages can now use 'System Settings' to customize which senders are used
- Send PIN can also have its message customized / Translated via 'System Settings'
- Integriti Web: Added support for Custom Fields to user editor
- Recent Activity Report (from the right-click menu of any entity): Has been upgraded to use the regular review control. While it can no longer be arbitrarily sorted by any column, it now has the usual review context menu's, and colouring.
- Schindler Lift HLI: Access review is now given its own category, and is tied to the user, so they can show up in activity / access reports.

Issues Resolved

- CCTV Viewer - Added the actual error message to status message shown when starting video stream fails
- Review Filters in gatekeeper now show in 'real' Review windows that can be 'live' and are correctly coloured
- Format Strings: All date times (even custom fields) can now be formatted
- Cards: Fixed an issue that caused cards with 'all zero' data to be incorrectly sent to controllers (resulting in erroneous credential clashes)
- Item Editors - Fixed a bug that resulted in the 'Unsaved Changes' warning being shown when nothing has changed for some windows that contain 'filters'.
- Fixed an issue that caused database restores from some previous versions to not allow login due to 'insufficient client licenses available'
- Fixed an issue that prevented the importing of some Integrated Devices
- Disabled Time & Custom Item change triggers now correctly obey the 'disabled' setting.
- Web Interface: Made it impossible to delete the "What" entity, leaving a blank permission row

Vector Schematics – New Features in detail

- New file format support in addition to the current raster-based file formats.
 - SVG – Scalable Vector Graphics file format for map background, image elements and element presenters.
- Map Properties:
 - Background border colour and width.
 - Zoom settings: max and min zoom value for the map.
- Element Properties:
 - Selectable – specify whether the element can be selected through mouse clicks.
 - Zoom behaviour settings: This lets us control how the element will behave when the map grows and shrink during zooming in and out. The available options are.
 - Dynamic size: This attribute lets us describe how the element should size in relation to different zoom levels. Options available are:
 1. Element should size with background (the default);
 2. Maintain a constant size;
 3. Maintain a constant size within a specified zoom range.

Option 2 and 3 lets the element maintain a constant size even when the map grows and shrink during zooming in and out. For these two options the user needs to specify a zoom position. The zoom position tells where the element is going to stay on the map as the map grows and shrink during zooming. The options for zoom position in relation to the element are:

1. Top – Left

2. Top – Centre
3. Top – Right
4. Centre – Left
5. Centre – Centre: The default
6. Centre – Right
7. Bottom – Left
8. Bottom – Right
9. Bottom – Left
10. Specify A Position: For this the user will need to specify the Dynamic Size Zoom Position which are the mouse x and y position on the map.

In addition to specifying the zoom position, for option 3 the user will need to specify the zoom range for which the element size remains constant.

- Dynamic visibility: This attribute lets us control the visibility of the element in relation to zoom level. The options are

1. Always Visible:
2. Visible Within Range: The element will only be visible within a given zoom range. For this the user will also need to specify a zoom range.

- Element selection highlight:
 - Box selection for rectangle, icon and image elements.
 - Border/line selection for ellipse and line elements.
 - The selection is highlighted using animating dashed white and black lines overlaying each other. The selection animation occurs for only a brief period of time.
- Smooth transition:
 - Smooth zoom transition.
 - Fade in and out transition for element selection.
 - Fade in and out transition for element visibility.
- The map rendering is resolution independent. A 100% view means the map will be completely shown to fill the viewable area irrespective of the size of the viewing window.
- Zoom in and out buttons.
- A text box to specify a zoom level in percentage.
- A zoom and position reset button which centres the map at 100% zoom.

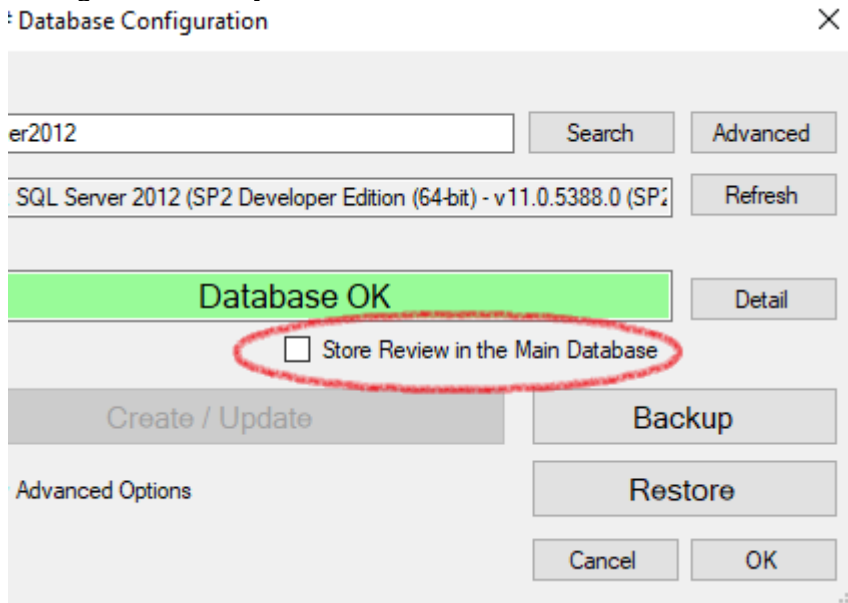
A movable and expandable (drop down) layers menu placed on the top left corner of the map. By default, when opening a new map, the layer menu is shown only when layers are available.

APPENDIX

V18 REVIEW IMPROVEMENTS

V18 significantly improves the 'Review' Event log subsystem

It is now strongly recommended that Review is not stored in the 'main database'. Ensure the "Store Review in the Main Database" checkbox is NOT checked in the "Database Configuration" utility.



The Application Server will automatically migrate all historic review to the new system. Your system will continue to work as normal while this happens in the background, but historic review will not show up in filters / reports until the migration is complete. Migration typically occurs at approximately 100,000 events per minute.

Ensure enough **additional** disk space is available in SQL server to store all of the existing review **again** before upgrading to this version. (approx. 1GB per million review records)

If your old review was stored in external databases the additional disk space can will be freed once migration has completed. If existing review was stored in the main database, your DBA or Inner Range Professional services can 'shrink' your database to reclaim this space.