

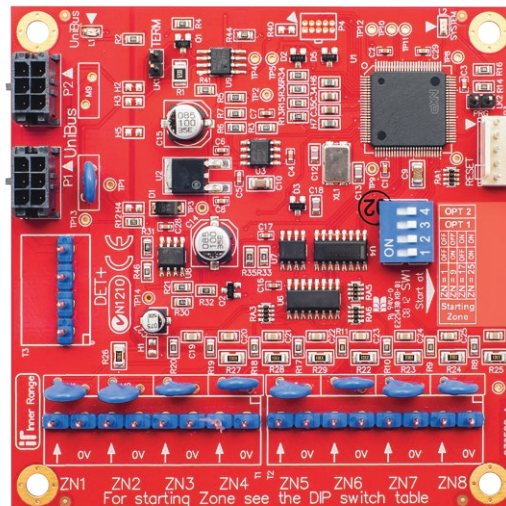
The UniBus 8 Zone Expander connects to an Integriti Security Controller (ISC), 8 Zone Expander or 16 Zone Expander Module via the UniBus Port. It provides an additional 8 Zone Inputs that support all Integriti Zone Types including Multistate and Counter types along with extra detector power supply connections (DET+) to simplify device wiring. The UniBus 8 Zone Expander is designed for installation within the same enclosure as its UniBus host module.

## Host Module Compatibility

The 8 Zone UniBus Expander is compatible with the following UniBus Host Modules:

- Integriti ISC Controller (Part: 996001) Connect up to 2
- Integriti 16 Zone RS-485 LAN Expander \*Connect up to 2
- Integriti 8 Zone RS-485 LAN Expander \*Connect up to 4

*\*These host modules are planned for future release*



## Features

- 8 Universal Zone Inputs
- Support for Multistate EOL circuits
- Support for counter type inputs
- Programmable de-bounce times
- DIP switch addressable first zone 1, 9, 17 or 25
- UniBus loop-through connectors
- 4 Way DET+ 13.75V outputs
- 2 LED status / fault indicators
- Surge protected inputs
- Over-The-Wire firmware upgradable
- Integriti "C" size footprint 94 x 94mm
- Can be installed above other "C" size PCB's\*\*
- A Snap off strip is included to allow installation above Integriti "B" size PCB's\*\*

**\*\* 35mm standoff kit required - Part Number 999009**

## UniBus In-Cabinet Expansion

UniBus is an innovative in-cabinet bus which allows the connection of Expansion modules, Communications modules and Door & Reader Modules on a common Plug & Play bus.

UniBus is built on the highly reliable CANBus technology and replaces the need for ribbon cables and specialised connectors

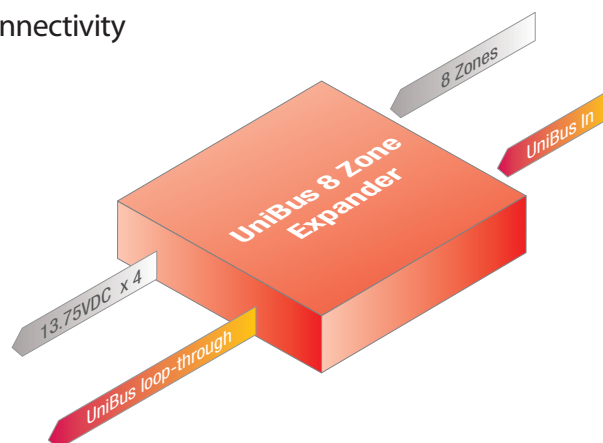
**Up to six UniBus modules can be daisy chained to an ISC controller**

## UniBus Modules Available

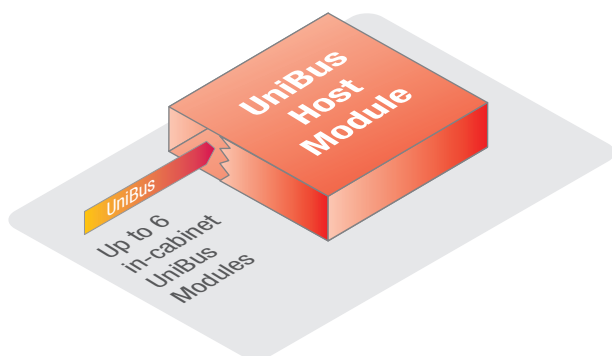
- 8 Auxiliary Relay Card
- 2 Port RS-232/RS-485 Serial Card
- 4 Zone Industrial Analogue input card\*

*\*UniBus device planned for future release*

## Connectivity



## UniBus Installation



UniBus Devices are designed for installation within the same enclosure as the UniBus host module. A UniBus host can interface a maximum of six UniBus devices in any combination, provided they are all within the intended functionality of the host module

## Specifications

### Physical

PCB size code:	Integrati "C" size
PCB size:	94(L) x 94(W)(mm)
PCB size including snap off strip:	105(L) x 94(W)(mm)
Height:	15(D)(mm) (28mm with UniBus cable connected)
Installation environment:	0°C - 40°C @15% - 85% Relative humidity(non-condensing)

### Electrical

Power Supply Input:	11V to 14V DC via host module
Static Current Consumption:	75mA. (not including detector power)
DET+:	Output Voltage 13.75V DC - sourced from host
DET+ Output Current:	Limited to available current from host

### Connections

Zone Inputs:	8
DET+ Out:	4
UniBus Port:	1
UniBus loop-through port:	1
Connection to Host Module:	Via 270mm UniBus patch lead (supplied)

### Power Considerations

The UniBus host module supplies DET+ current and static device current to all connected UniBus devices.

Total current consumption is therefore the sum of all:

- Static Current of all connected UniBus devices
- Static Current of host module
- Host module battery charging current
- Ancillary devices connected to all DET+ connections
- Ancillary devices connected to host module's RS485 LAN+

### Compliance

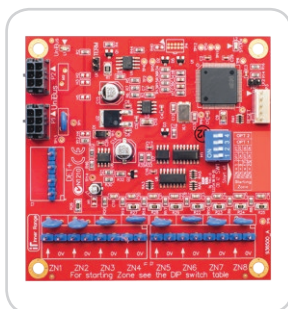
Electrical



Environmental



## Ordering Options



Integrati UniBus 8 Zone Input Expander  
PCB & Accessories (Includes 270mm  
UniBus patch cable)  
**Part 996500PCB&K**



Spare UniBus patch cables  
**Part 996791L** UniBus Patch Cable 270mm six way  
**Part 996791S** UniBus Patch Cable 220mm six way